

# MFIII™

SWITZERLAND



# PLAQX & ALFA PLAQX

With unique formulation derived from natural, non-GMO soy, is an evolution in modern medicine.

*Series*



Liver



Cardiovascular



Blood Vessel



Kidney\*



Brain



Cellular Membrane



Liver



Cardiovascular





## NEW IMPROVED FORMULA **PlaqX Extra**

With 100% vegetal based formulation



Heart



Liver



Kidney



Blood Vessel

## NOW WITH 3 ACTIVE INGREDIENTS FOR OUTSTANDING LONGEVITY & BEAUTY

The newly improved MF3 PlaqX Extra is a phyto therapeutic supplement that offers even better efficacy and bioavailability to support cellular membrane health, maintain healthy cholesterol levels as well as liver health.

Its upgraded formulation now contains Polyenyl PC Complex, which is a proprietary blend of Polyenylphosphatidylcholine (PPC), and two additional ingredients, Phosphatidylserine (PS) and Alpha Tocopherol.

Besides having a powerful line-up of phyto ingredients, the softgel shell is also made with 100% plant-based gelatin, making the newly upgraded PlaqX Extra a suitable supplement for all to consume, including vegetarians and vegans alike.

The synergy effects of this improved formulation offer better efficacy and bioavailability that takes the support and maintenance of cell membrane health, cholesterol levels and also liver functions to the next level.

## FORTIFICATIONS *in this formulation*

### POLYENYLPHOSPHATIDYLCHOLINE (PPC)

- ✓ Reduce visceral fat, which also known as a stubborn belly fat
- ✓ Provides integrity and structure to the cell membranes
- ✓ Regulates fluidity for nutrients and oxygen transport
- ✓ Long term supplementation of PPC reduces the absorption of cholesterol and circulating cholesterol in the system
- ✓ A major constituent of bile, which is necessary to the lipid metabolism

### PHOSPHATIDYLSERINE (PS)

- ✓ Increase the bioavailability of PPC to organs demanding this nutrient
- ✓ Added in a sufficient quantity to improve and support the role of PPC

### ALPHA TOCOPHEROL

- ✓ Protect PPC from degradation and improve formulation stability
- ✓ Protects cell membranes and other fat-soluble parts of the body from oxidative damage

### WHAT IS FATTY LIVER DISEASE?

When the human liver is confronted by various exogenous substances, it can result in the liver producing reaction metabolites that is harmful to the liver tissue that in turn can contribute to fatty liver disease.

### COMMON EXOGENOUS FACTOR THAT CAN STRESS THE LIVER:

- ⚠ **Excessive alcohol consumption**
- ⚠ **Over consumption of sugar and saturated fat**
- ⚠ **Medications**
- ⚠ **Exposure to high amounts of pollution**

### THERAPEUTIC EFFECT OF PPC ON FATTY LIVER DISEASE

- ✓ Reduced serum activities of liver enzyme markers released by liver tissue
- ✓ Reduce risk of NAFLD by lessening the lipid peroxidation triggered by free radical and oxidative insult
- ✓ Membrane damage was slowed, membrane integrity was protected
- ✓ Cell death, fibrosis, and fatty infiltration of the liver tissue were diminished
- ✓ Cell synthesis of RNA and protein increased, suggesting liver tissue regeneration
- ✓ Liver metabolism improved



# MF3 PlaQX and PlaQX Extra

Revealing PlaQX's potential for beauty and longevity.



\*Please consult your doctor/ pharmacist before taking this product

## WHAT IS PLAQX?

A revolutionary Swiss-based treatment, MF3 PlaQX has been used for 55 years in about one-fourth of the world's countries. It was originally developed to treat liver disease and dissolve fatty embolus during and after trauma surgery. In the 1990s, it evolved into a potent solution for plaque deposits.

When doctors observed their patients administered with this treatment, they also discovered that over time, those under their charge looked younger and healthier – revealing PlaQX's potential for beauty and longevity.

## WHY YOU NEED PLAQX

Our blood vessels transport oxygen and vital nutrients to various parts of the body. Hindering this basic, life-supporting functionality are deposits we call plaque, which accumulates over time from substances such as fat and cholesterol. Plaque causes the blood vessels to get clogged up, resulting in serious and potentially fatal diseases – including strokes and heart attacks.

MF3's PlaQX and PlaQX Extra are specially formulated to help clear out this plaque, effectively acting as a personal clean-up crew for our blood vessels!

**Today, MF3 PlaQX's unique formulation, derived from natural, non-GMO soy, is an evolution in modern medicine.**

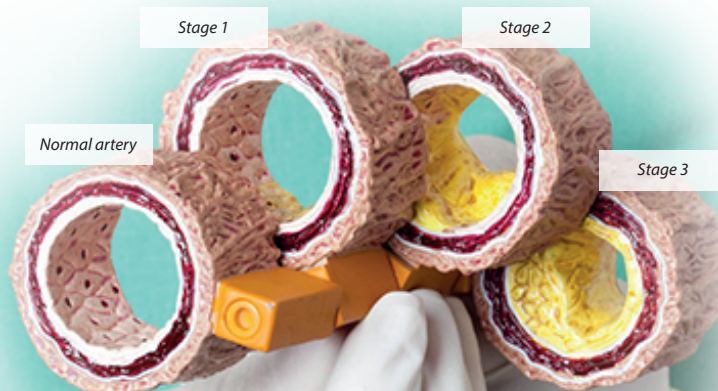
It is not only used to remove fatty, hardened plaque from the blood vessels, improving the overall health of the heart, liver, and kidney, but also as a supplement for general anti-aging.

## PLAQX'S BENEFITS:

- Clears out plaque
- Normalizes total cholesterol
- Increases HDL (High Density Lipoprotein)
- Improves liver function
- Rejuvenates all cell membranes
- Natural, derived from non-GMO soy
- Lowers LDL (Low Density Lipoprotein) and VLDL (Very Low Density Lipoprotein)
- Lower triglycerides
- Maintain healthy kidney function
- Easy to consume



*MF3 PlaQX Extra is similar in efficacy to MF3 SwissPlaQX.*



*Model of normal artery and 3 stages of arterosclerosis*

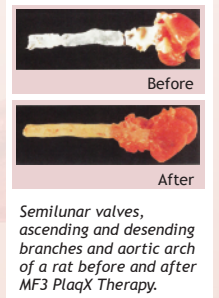
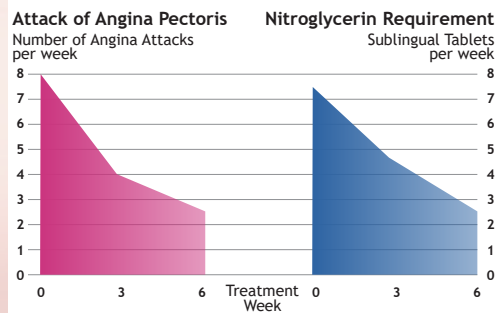
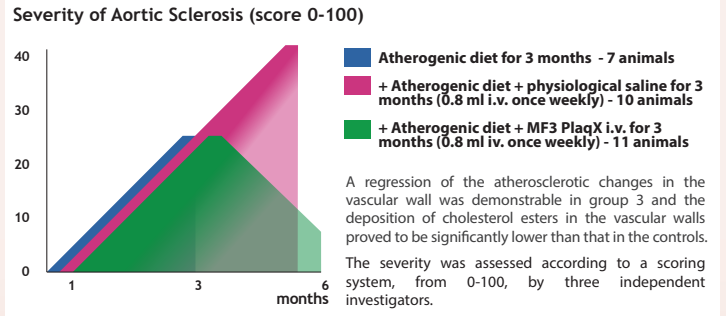


# PLAQX'S CLINICAL STUDIES

Before and after image of a 56-year-old male patient undergoing phosphatidylcholine therapy in Europe. The patient was insulin-dependent with diabetes mellitus, suffering from an acute bout of vasculitis affecting his toes on the right foot and two toes on the left.

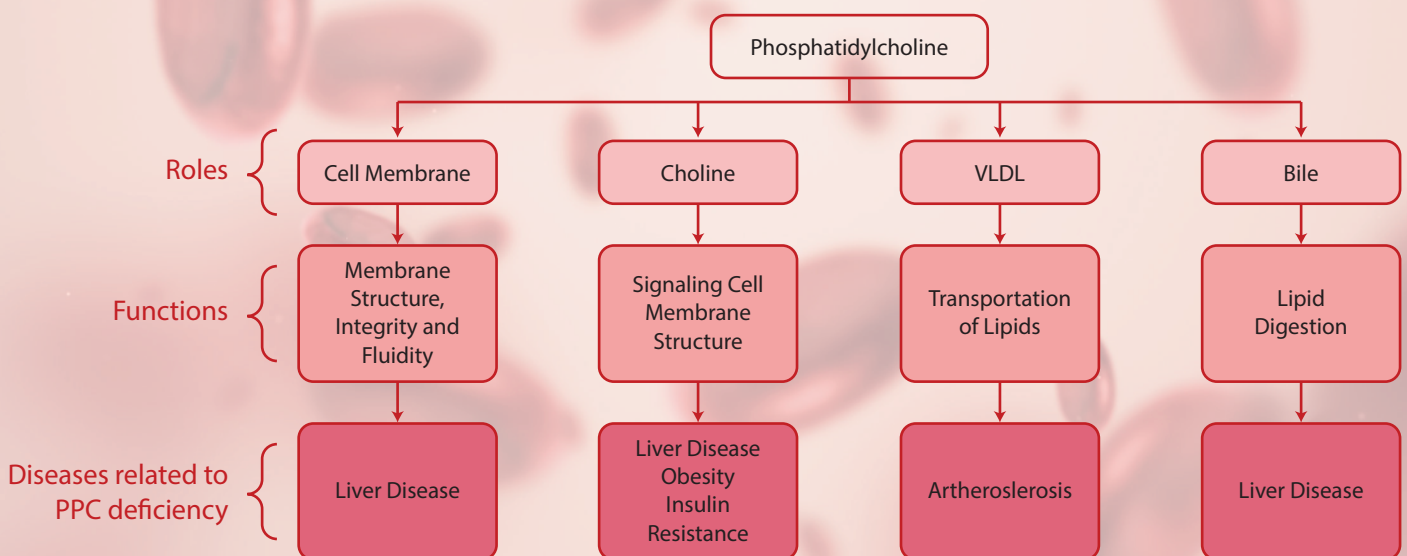


The figure below shows the results of investigations carried out with quails by W.W Stafford and Ch. H Day. After feeding an atherogenic diet to all birds for 3 months, some of the animals were operated on to study the severity of vascular wall changes.



## HOW IT WORKS: THE SECRET OF POLYENYLPHOSPHATIDYLCHOLINE

- An essential component of the cellular membrane adding fluidity and promoting overall stability, while also aiding in the function of transmembrane proteins.
- Has antioxidant, cytoprotective and fluid-regulating effects.
- Integral component of lipoproteins, especially HDL, that is involved in the transport of cholesterol from the arterial walls to the liver for processing.
- A major constituent of bile, necessary for lipid metabolism.
- Packages cholesterol and triglycerides into very-low-density lipoproteins (VLDL)
- Plays vital role cholesterol transport and degradation, helps maintain healthy blood cholesterol and triglyceride levels.
- Reduces visceral fat (also known as stubborn belly fat).



**60% of each cell membrane in the body is composed of Phosphatidylcholine (PPC)** – deficiency may cause the cell membrane to not only lose out on the benefits listed above, but also cause the cell membrane to be susceptible to oxidative stress and damage, causing dysfunction in the brain, digestive tract, and liver.

MF3's PlaQX provides an all-natural, easy-to-use solution for PPC deficiency, while also providing the body with rejuvenating anti-aging effects, making it an excellent health supplement for your everyday health, beauty, and longevity needs.





# Alfa PlaQX Series

Alfa PlaQX Pro | Alfa PlaQX

The Best Defence is a Good Offence



Brain



Liver



Cardiovascular



Cellular Membrane

MF3 Alfa PlaQX Softgels Series bring essential nutrient choline to the fore. Current research continues to uncover choline's effects on health - particularly in the heart, mind and liver, which are affected by the CDP-choline pathway. The pathway is a mechanism which produces phosphatidylcholine (PC), a vital component of cell membranes and lipid-derived signalling molecules.

The body makes some choline, but most choline is generated from food and dietary supplements. MF3 Alfa PlaQX Softgels contain proprietary Choline Complex and Alpha-Tocopherol to increase the bioavailability and effectiveness of the choline squad in the body.

## Ingredients

Both MF3's Alfa PlaQX and Alfa PlaQX Pro Softgels contain a Choline complex, a unique blend of choline molecules involved in the CDP-choline pathway and offer special synergy effects.

- **Cytidine diphosphate-choline**

A choline source to form the pathway's end product. It is also important for synaptic strength and neural connectivity.

- **Phosphatidylcholine (PC)**

The end product of the pathway. The dominant choline form in the organs and brain. Involved in the hepatic transport of VLDL (very low density lipoproteins) in the liver and cell membrane maintenance.

- **Choline alfoscerate**

Generated from the breakdown of PC. Added into the Alfa PlaQX series blends to ensure that the body can utilise the PC mainly for cell maintenance rather than being broken down. It also has the ability to cross the blood-brain-barrier and reach the central nervous system. Thus, it serves as a potent nootropic – a substance which can be consumed to improve mental performance.

- **Alpha Tocopherol (a type of Vitamin E)**

It is an active form of fat-soluble antioxidant. It protects cells from damage due to oxidative stress and free radicals. Studies have shown that alpha tocopherol promotes healthy brain ageing, delays Alzheimer's disease-related functional decline, increases oxidative resistance in vitro, prevents atherosclerotic plaque formation, and inhibits liver fibrosis driven by oxidative damage.

**Effective at increasing both systemic and neural choline concentration to support cardiovascular health, brain and liver functions, and maintenance of cellular membrane structures.**

### For the Brain

**Alfa PlaQX**  
Memory and learning, cognitive health



### Alfa PlaQX Pro

Complementary nutritional therapy for the management of Dementia/ Alzheimer

### For the Liver

**Alfa PlaQX**  
Support liver health



### Alfa PlaQX Pro

Promote reduction of visceral fat and support liver health

### For Cardiovascular

**Alfa PlaQX**  
Reducing homocysteine and cholesterol arterial plaque



### Alfa PlaQX Pro

Reducing homocysteine and cholesterol arterial plaque and also decreasing cholesterol uptake on the gastrointestinal layer

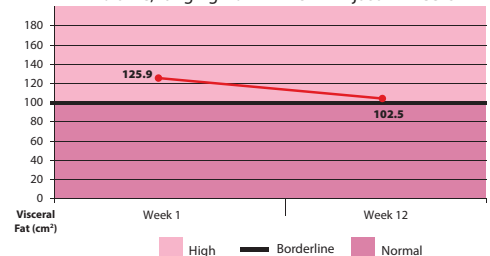
### For the Cellular Membrane

**Alfa PlaQX & Alfa PlaQX Pro**  
Support cellular membrane fluidity and stability

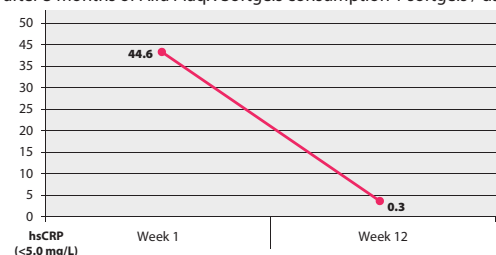


## ALFA PLAQX SOFTGELS CASE STUDY

Volunteer experienced a reduction of visceral fat volume, ranging from 1-24cm<sup>2</sup> in just 12 weeks



Reduction of inflammatory marker c-reactive protein (CRP) levels after 3 months of Alfa PlaQX Softgels consumption 1 softgels / day





**PLAQX SERIES**



Liver



Cardiovascular






Blood Vessel



Kidney\*

\*Please consult your doctor/ pharmacist before taking this product

	EFFECTIVENESS	USP	BIOACTIVES & ACTIVE INGREDIENTS	PC DOSAGE PER CAPSULE	RECOMMENDED DOSAGE PER DAY
 <p><b>PLAQX EXTRA</b> WITH NEW IMPROVED FORMULA</p>	<ul style="list-style-type: none"> <li>Works synergically in promoting cellular membrane repair, regeneration, and functions.</li> <li>Maintain healthy cholesterol levels, support liver functions and detoxification and maintain cell membrane integrity and fluidity.</li> </ul>	<p>100% vegetal based formulation with a high concentration of Polenyl PC (proprietary blend of PC, PS, &amp; Alpha Tocopherol) for better efficacy and bioavailability.</p>	<p><b>Polyenylphosphatidylcholine</b>, Phosphatidylserine, and Alpha Tocopherol</p>	<p>1175mg of Phosphatidylcholine</p>	<p>1 softgel per day 30 minutes before meal or 2 hours after meal.</p> <p><b>Contraindication:</b> May cause stomach upset. This symptom may subside after 2 weeks of supplementation. Not suitable for anyone with soy allergy and women who are pregnant or breastfeeding.</p>
 <p><b>PLAQX EXTRA</b></p>	<ul style="list-style-type: none"> <li>Highly effective for liver functions and cell membrane structure.</li> <li>Effective in increasing systemic choline concentrations.</li> </ul>	<p>A higher concentration of high purity Phosphatidylcholine.</p>	<p><b>Phosphatidylcholine</b></p>	<p>1200mg of Phosphatidylcholine</p>	<p>1 softgel per day OR a maximum of 3 softgels per day depending on the physician's instruction. Preferably taken at different times to achieve a better absorption rate and bioavailability throughout the day.</p> <p><b>Contraindication:</b> May cause stomach upset. This symptom may subside after 2 weeks of supplementation. Not suitable for anyone with soy allergy and women who are pregnant or breastfeeding.</p>
 <p><b>PLAQX</b></p>	<ul style="list-style-type: none"> <li>Increase Phosphatidylcholine level in the body.</li> </ul>	<p>Sourced from Phosphatidylcholine.</p>		<p>900mg of Phosphatidylcholine</p>	<p>1 - 2 softgels per day. Preferably taken at different times to achieve a better absorption rate and bioavailability throughout the day.</p> <p><b>Contraindication:</b> May cause stomach upset. This symptom may subside after 2 weeks of supplementation. Not suitable for anyone with soy allergy and women who are pregnant or breastfeeding.</p>

**ALFA PLAQX SERIES**



Brain





Cellular Membrane



Liver



Cardiovascular

	EFFECTIVENESS	USP	BIOACTIVES & ACTIVE INGREDIENTS	PC DOSAGE PER CAPSULE	RECOMMENDED DOSAGE PER DAY
 <p><b>ALFA PLAQX PRO</b></p>	<ul style="list-style-type: none"> <li>Highly effective for liver functions, cardiovascular health, brain functions and cellular membrane structures.</li> <li>Effective in increasing both systemic and neural choline concentration.</li> <li>Increase Cytidine diphosphate-choline and uridine nucleotides levels.</li> </ul>	<p>Supply potent bioactive at one single administration to significantly improve the plasma choline concentration and reach therapeutic concentration rapidly: for faster onset of action.</p> <p>Suitable for middle adulthood with risk of Dementia, Alzheimer, and late adulthood.</p>	<p><b>Phosphatidylcholine</b>, Choline alfoscerate, cytidine diphosphate-choline, and Alpha Tocopherol</p>	<p><b>1,070mg of Choline Complex</b> <i>A proprietary blend of Choline alfoscerate, cytidine diphosphate-choline, phosphatidylcholine</i></p> <p><b>12.5mg Alpha Tocopherol</b></p>	<p>1 softgel per day. Preferably taken at different times to achieve a better absorption rate and bioavailability throughout the day.</p> <p><b>Contraindication:</b> Not suitable for anyone with soy allergy, and women who are pregnant or breastfeeding.</p>
 <p><b>ALFA PLAQX</b></p>	<ul style="list-style-type: none"> <li>Increase Choline alfoscerate and acetylcholine levels.</li> <li>Increase Phosphatidylcholine levels.</li> </ul>	<p>Promote steady-state concentration when taken at a divided dosage; allow the plasma choline concentration in the body to stay consistent.</p> <p>Suitable for teens, early adulthood, and middle adulthood.</p>		<p><b>249mg of Choline Complex</b> <i>A proprietary blend of Choline alfoscerate, cytidine diphosphate-choline, phosphatidylcholine</i></p> <p><b>12mg Alpha Tocopherol</b></p>	<p>1 or 2 softgels per day. Preferably taken at different times to achieve a better absorption rate and bioavailability throughout the day. Maximum 4 softgels daily.</p> <p><b>Contraindication:</b> Not suitable for anyone with soy allergy, and women who are pregnant or breastfeeding.</p>



## Plaqx Series References

Chirkin AA et al. Effect of polyunsaturated phosphatidyl-choline on lipid transport system in alcoholic liver injury. *Addict Biol.* 1998 Jan;3(1):65-70. doi: 10.1080/13556219872353

Cole, L. K., Vance, J. E., & Vance, D. E. (2012). Phosphatidylcholine biosynthesis and lipoprotein metabolism. *Biochimica et Biophysica Acta (BBA) - Molecular and Cell Biology of Lipids*, 1821(5), 754–761. doi:10.1016/j.bbali.2011.09.009

Connor WE, Witiak DT, Stone DB, Armstrong ML. Cholesterol balance and fecal neutral steroid and bile acid excretion in normal men fed dietary fats of different fatty acid composition. *J Clin Invest.* 1969;48:1363–1375.

Dietschy JM, Turley SD, Spady DK. Role of liver in the maintenance of cholesterol and low density lipoprotein homeostasis in different animal

D. Küllenberg, L. Taylor, M. Schneider, U. Massing. Health effects of dietary phospholipids. *Lipids Health Dis.* 2012; 11: 3. PMID: PMC3316137. Published online 2012 Jan 5. doi: 10.1186/1476-511X-11-https://www.ncbi.nlm.nih.gov/pmc/articles/PMC3316137/

Gundermann, K. J., Gundermann, S., Drozdziak, M., & Mohan Prasad, V. G. (2016). Essential phospholipids in fatty liver: a scientific update. *Clinical and experimental gastroenterology*, 9, 105–117. <https://doi.org/10.2147/CEG.S96362>

J.C. Robichaud, et al., Hepatic uptake and metabolism of phosphatidylcholine associated with high density lipoproteins, *Biochim. Biophys. Acta* 1790 (6) (2009) 538–551

Kidd, Parris. (1996). Phosphatidylcholine: A Superior Protectant Against Liver Damage. *Alternative Medicine Review.* 1. 258-274..

Nestel PJ, Havenstein N, Homma Y, Scott TW, Cook LJ. Increased sterol excretion with polyunsaturated-fat high-cholesterol diets. *Metabolism.* 1975;24:189–198.

Oh SY, Monaco PA. Effect of dietary cholesterol and degree of fat unsaturation on plasma lipid levels, lipoprotein composition, and fecal steroid excretion in normal young adult men. *Am J Clin Nutr.* 1985;42:399–413.

Robins SJ, Fasulo JM. High density lipoprotein, but not other lipoproteins, provide a vehicle for sterol transport in bile. *J Clin Invest* 1997;99:380–384.

Simmonds WJ, Hofmann AF, Theodor E. Absorption of cholesterol from a micellar solution: intestinal perfusion studies in man. *J Clin Invest.* 1967;46:874–890.

Vrins C. L. (2010). From blood to gut: direct secretion of cholesterol via transintestinal cholesterol efflux. *World journal of gastroenterology*, 16(47), 5953–5957. <https://doi.org/10.3748/wjg.v16.i47.5953>

Völzke H. Multicausality in fatty liver disease: is there a rationale to distinguish between alcoholic and non-alcoholic origin? *World J Gastroenterol.* 2012;18(27):3492–3501.

Zeisel SH. A brief history of choline. *Ann Nutr Metab.* 2012;61(3):254-8. doi: 10.1159/000343120. Epub 2012 Nov 26. PMID: 23183298; PMID: PMC442379.

## Alfa Plaqx Series References

Amenta F, Tayebati SK: Pathways of acetylcholine synthesis, transport and release as targets for treatment of adult-onset cognitive dysfunction. *Curr Med Chem* 2008, 15:488-498.

Aleppo G, Nicoletti F, Sortino MA, Casabona G, Scapagnini U, Canonico PL: Chronic L-alpha-glycerol-phosphoryl-choline increases inositol phosphate formation in brain slices and neuronal cultures. *Pharmacol Toxicol* 1994, 74:95-100.

Alvarez-Sabin J, Ortega G, Jacas C, et al. Long-term treatment with citicoline may improve poststroke vascular cognitive impairment. *Cerebrovasc Dis.* 2013;35(2):146-154.

Alvarez XA, Mouzo R, Pichel V, et al. Double-blind placebo-controlled study with citicoline in APOE genotyped Alzheimer's disease patients. Effects on cognitive performance, brain bioelectrical activity and cerebral perfusion. *Methods Find Exp Clin Pharmacol.* 1999;21(9):633-644.

Birks J. Cholinesterase inhibitors for Alzheimer's disease. *Cochrane Database Syst Rev.* 2006(1):CD005593.

Beckmann J, Lips KS. The non-neuronal cholinergic system in health and disease. *Pharmacology.* 2013;92(5-6):286-302.

Bertoia ML, Pai JK, Cooke JP, et al. Plasma homocysteine, dietary B vitamins, betaine, and choline and risk of

peripheral artery disease. *Atherosclerosis.* 2014;235(1):94-101.

Bidulescu A, Chambless LE, Siega-Riz AM, Zeisel SH, Heiss G. Usual choline and betaine dietary intake and incident coronary heart disease: the Atherosclerosis Risk in Communities (ARIC) study. *BMC Cardiovasc Disord.* 2007;7:20.

Cansev, M. (2006). Uridine and cytidine in the brain: Their transport and utilization. *Brain Research Reviews*, 52(2), 389–397. doi:10.1016/j.brainresrev.2006.05.001

Craig SA. Betaine in human nutrition. *Am J Clin Nutr.* 2004;80(3):539-549.

Dauncey MJ. Nutrition, the brain and cognitive decline: insights from epigenetics. *Eur J Clin Nutr.* 2014;68(11):1179-1185.

Davalos A, Alvarez-Sabin J, Castillo J, et al. Citicoline in the treatment of acute ischaemic stroke: an international, randomised, multicentre, placebo-controlled study (ICTUS trial). *Lancet.* 2012;380(9839):349-357.

13. Dalmeijer GW, Olthof MR, Verhoef P, Bots ML, van der Schouw YT. Prospective study on dietary intakes of folate, betaine, and choline and cardiovascular disease risk in women. *Eur J Clin Nutr.* 2008;62(3):386-394



## WINNING OVER EXPERT RECOGNITIONS IS A CELEBRATION OF OUR DISTINCTION

MF3 has received a number of international awards in Europe, the Middle East and the Pacific for our constant innovation and quality assurance.



MOST EFFECTIVE MARKETING  
CAMPAIGN WINNER



MOST INNOVATIVE  
INGREDIENT FINALIST



DOUBLE GOLD MEDAL WINNER  
GENEVA INVENTION 2011

- BEST INGREDIENT INNOVATION
- BEST FORMULATION



**Asia Pacific  
Excellence Award  
2011**

- EXCELLENCE BRAND
- EXCELLENCE PRODUCT
- EXCELLENCE LEADERSHIP



WINNER OF THE BRANDLAUREATE  
INTERNATIONAL QUALITY HEALTH &  
BEAUTY SOLUTIONS AWARD 2020



[www.mf3swiss.com](http://www.mf3swiss.com)



- f MF3official
- @ mf3swiss
- MF3 Swiss

Another Swiss innovation from NexGen BioPharma Research & Innovation SARL  
(Co. No. CH-660.5.811.015-7) Untermüli 6, 6300 Zug, Switzerland.

Distributed by:

Product images are for illustrative purposes only. Differences in screen or printing qualities may cause actual product to appear differently from the website and marketing materials. Please also note that the product may come in different packaging in accordance with their technical requirements. Please consult our specialist for the specific packaging available to you.



## WINNING OVER EXPERT RECOGNITIONS IS A CELEBRATION OF OUR DISTINCTION

MF3 has received a number of international awards in Europe, the Middle East and the Pacific for our constant innovation and quality assurance.



www.mf3swiss.com



MF3official  
mf3swiss  
MF3 Swiss

Another Swiss innovation from NexGen BioPharma Research & Innovation SARL  
(Co. No. CH-660.5.811.015-7) Untermüli 6, 6300 Zug, Switzerland.

Distributed by:

Product images are for illustrative purposes only. Differences in screen or printing qualities may cause actual product to appear differently from the website and marketing materials. Please also note that the product may come in different packaging in accordance with their technical requirements. Please consult our specialist for the specific packaging available to you.

## Choose your ESSENTIALS



EFFECTIVENESS	USP	BIOACTIVES & ACTIVE INGREDIENTS	PC DOSAGE PER CAPSULE	RECOMMENDED DOSAGE PER DAY
<ul style="list-style-type: none"> <li>Works synergically in promoting cellular membrane repair, regeneration, and functions.</li> <li>Maintain healthy cholesterol levels, support liver functions and detoxification and maintain cell membrane integrity and fluidity.</li> </ul>	100% vegetal based formulation with a high concentration of Polenyl PC (proprietary blend of PC, PS, & Alpha Tocopherol) for better efficacy and bioavailability.	Polyenylphosphatidylcholine, Phosphatidylserine, and Alpha Tocopherol	1175mg of Phosphatidylcholine	1 softgel per day 30 minutes before meal or 2 hours after meal. <b>Contraindication:</b> May cause stomach upset. This symptom may subside after 2 weeks of supplementation. Not suitable for anyone with soy allergy and women who are pregnant or breastfeeding.
<ul style="list-style-type: none"> <li>Highly effective for liver functions and cell membrane structure.</li> <li>Effective in increasing systemic choline concentrations.</li> <li>Increase Phosphatidylcholine level in the body.</li> </ul>	A higher concentration of high purity Phosphatidylcholine.	Phosphatidylcholine	1200mg of Phosphatidylcholine	1 softgel per day OR a maximum of 3 softgels per day depending on the physician's instruction. Preferably taken at different times to achieve a better absorption rate and bioavailability throughout the day. <b>Contraindication:</b> May cause stomach upset. This symptom may subside after 2 weeks of supplementation. Not suitable for anyone with soy allergy and women who are pregnant or breastfeeding.
<ul style="list-style-type: none"> <li>Increase Phosphatidylcholine level in the body.</li> </ul>	Sourced from Phosphatidylcholine.	Phosphatidylcholine	900mg of Phosphatidylcholine	1 - 2 softgels per day. Preferably taken at different times to achieve a better absorption rate and bioavailability throughout the day. <b>Contraindication:</b> May cause stomach upset. This symptom may subside after 2 weeks of supplementation. Not suitable for anyone with soy allergy and women who are pregnant or breastfeeding.

## ALFA PLAQX SERIES

EFFECTIVENESS	USP	BIOACTIVES & ACTIVE INGREDIENTS	PC DOSAGE PER CAPSULE	RECOMMENDED DOSAGE PER DAY
<ul style="list-style-type: none"> <li>Highly effective for liver functions, cardiovascular health, brain functions and cellular membrane structures.</li> <li>Effective in increasing both systemic and neural choline concentration.</li> <li>Increase Cytidine diphosphate-choline and uridine nucleotides levels.</li> <li>Increase Choline alfoscerate and acetylcholine levels.</li> <li>Increase Phosphatidylcholine levels.</li> </ul>	Supply potent bioactive at one single administration to significantly improve the plasma choline concentration and reach therapeutic concentration rapidly: for faster onset of action.  Suitable for middle adulthood with risk of Dementia, Alzheimer, and late adulthood.	Phosphatidylcholine, Choline alfoscerate, cytidine diphosphate-choline, and Alpha Tocopherol	1,070mg of Choline Complex <i>A proprietary blend of Choline alfoscerate, cytidine diphosphate-choline, phosphatidylcholine</i>  12.5mg Alpha Tocopherol	1 softgel per day. Preferably taken at different times to achieve a better absorption rate and bioavailability throughout the day. <b>Contraindication:</b> Not suitable for anyone with soy allergy, and women who are pregnant or breastfeeding.
<ul style="list-style-type: none"> <li>Increase Choline alfoscerate and acetylcholine levels.</li> <li>Increase Phosphatidylcholine levels.</li> </ul>	Promote steady-state concentration when taken at a divided dosage; allow the plasma choline concentration in the body to stay consistent.  Suitable for teens, early adulthood, and middle adulthood.	Phosphatidylcholine, Choline alfoscerate, cytidine diphosphate-choline, and Alpha Tocopherol	249mg of Choline Complex <i>A proprietary blend of Choline alfoscerate, cytidine diphosphate-choline, phosphatidylcholine</i>  12mg Alpha Tocopherol	1 or 2 softgels per day. Preferably taken at different times to achieve a better absorption rate and bioavailability throughout the day. Maximum 4 softgels daily. <b>Contraindication:</b> Not suitable for anyone with soy allergy, and women who are pregnant or breastfeeding.

## Plaqx Series References

Chirkin AA et al. Effect of polyunsaturated phosphatidyl-choline on lipid transport system in alcoholic liver injury. Addict Biol. 1998 Jan;3(1):65-70. doi: 10.1080/13556219872353

Cole, L. K., Vance, J. E., & Vance, D. E. (2012). Phosphatidylcholine biosynthesis and lipoprotein metabolism. Biochimica et Biophysica Acta (BBA) - Molecular and Cell Biology of Lipids, 1821(5), 754-761. doi:10.1016/j.bbaliip.2011.09.009

Connor WE, Witiak DT, Stone DB, Armstrong ML. Cholesterol balance and fecal neutral steroid and bile acid excretion in normal men fed dietary fats of different fatty acid composition. J Clin Invest. 1969;48:1363-1375.

Dietschy JM, Turley SD, Spady DK. Role of liver in the maintenance of cholesterol and low density lipoprotein homeostasis in different anima

D. Küllenbergl,T.Laylor,M.Schneider,U.Massing. Health effects of dietary phospholipids. Lipids Health Dis. 2012; 11: 3.PMCID: PMC3316137.Published online 2012 Jan 5. doi: 10.1186/1476-511X-11-https://www.ncbi.nlm.nih.gov/pmc/articles/PMC3316137/

Gundermann, K. J., Gundermann, S., Drozdik, M., & Mohan Prasad, V. G. (2016). Essential phospholipids in fatty liver: a scientific update. Clinical and experimental gastroenterology, 9, 105-117. https://doi.org/10.2147/CEG.S96362

J.C. Robichaud, et al., Hepatic uptake and metabolism of phosphatidylcholine associated with high density lipoproteins, Biochim. Biophys. Acta 1790 (6) (2009) 538-551

Kidd, Parris. (1996). Phosphatidylcholine: A Superior Protectant Against Liver Damage. Alternative Medicine Review. 1. 258-274..

Nestel PJ, Havenstein N, Homma Y, Scott TW, Cook LJ. Increased sterol excretion with polyunsaturated-fat high-cholesterol diets. Metabolism. 1975;24:189-198.

Oh SY, Monaco PA. Effect of dietary cholesterol and degree of fat unsaturation on plasma lipid levels, lipoprotein composition, and fecal steroid excretion in normal young adult men. Am J Clin Nutr. 1985;42:399-413.

Robins SJ, Fasulo JM. High density lipoprotein, but not other lipoproteins, provide a vehicle for sterol transport in bile. J Clin Invest 1997;99:380-384.

Simmonds WJ, Hofmann AF, Theodor E. Absorption of cholesterol from a micellar solution: intestinal perfusion studies in man. J Clin Invest. 1967;46:874-890.

Vrns C. L. (2010). From blood to gut: direct secretion of cholesterol via transintestinal cholesterol efflux. World journal of gastroenterology, 16(47), 5953-5957. https://doi.org/10.3748/wjg.v16.i47.5953

Völzke H. Multicausality in fatty liver disease: is there a rationale to distinguish between alcoholic and non-alcoholic origin? World J Gastroenterol. 2012;18(27):3492-3501.

Zeisel SH. A brief history of choline. Ann Nutr Metab. 2012;61(3):254-8. doi: 10.1159/000343120. Epub 2012 Nov 26. PMID: 23183298; PMCID: PMC4422379.

## Alfa Plaqx Series References

Amenta F, Tayebati SK: Pathways of acetylcholine synthesis, transport and release as targets for treatment of adult-onset cognitive dysfunction. Curr Med Chem 2008, 15:488-498.

Aleppo G, Nicoletti F, Sortino MA, Casabona G, Scapagnini U, Canonico PL: Chronic L-alpha-glycerol-phosphoryl-choline increases inositol phosphate formation in brain slices and neuronal cultures. Pharmacol Toxicol 1994, 74:95-100.

Alvarez-Sabin J, Ortega G, Jacas C, et al. Long-term treatment with citicoline may improve poststroke vascular cognitive impairment. Cerebrovasc Dis. 2013;35(2):146-154.

Alvarez XA, Mouzo R, Pichel V, et al. Double-blind placebo-controlled study with citicoline in APOE genotyped Alzheimer's disease patients. Effects on cognitive performance, brain bioelectrical activity and cerebral perfusion. Methods Find Exp Clin Pharmacol. 1999;21(9):633-644.

Birks J. Cholinesterase inhibitors for Alzheimer's disease. Cochrane Database Syst Rev. 2006(1):CD005593.

Beckmann J, Lips KS. The non-neuronal cholinergic system in health and disease. Pharmacology. 2013;92(5-6):286-302.

Bertoia ML, Pai JK, Cooke JP, et al. Plasma homocysteine, dietary B vitamins, betaine, and choline and risk of

peripheral artery disease. Atherosclerosis. 2014;235(1):94-101.

Bidulescu A, Chambless LE, Siega-Riz AM, Zeisel SH, Heiss G. Usual choline and betaine dietary intake and incident coronary heart disease: the Atherosclerosis Risk in Communities (ARIC) study. BMC Cardiovasc Disord. 2007;7:20.

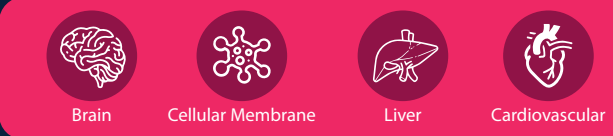
Cansev, M. (2006). Uridine and cytidine in the brain: Their transport and utilization. Brain Research Reviews, 52(2), 389-397. doi:10.1016/j.brainresrev.2006.05.001

Craig SA. Betaine in human nutrition. Am J Clin Nutr. 2004;80(3):539-549.

Dauncey MJ. Nutrition, the brain and cognitive decline: insights from epigenetics. Eur J Clin Nutr. 2014;68(11):1179-1185.

Davalos A, Alvarez-Sabin J, Castillo J, et al. Citicoline in the treatment of acute ischaemic stroke: an international, randomised, multicentre, placebo-controlled study (ICTUS trial). Lancet. 2012;380(9839):349-357.

13. Dalmeijer GW, Olthof MR, Verhoef P, Bots ML, van der Schouw YT. Prospective study on dietary intakes of folate, betaine, and choline and cardiovascular disease risk in women. Eur J Clin Nutr. 2008;62(3):386-394



\*Please consult your doctor/ pharmacist before taking this product



SWITZERLAND



# PLAQX & ALFA PLAQX Series

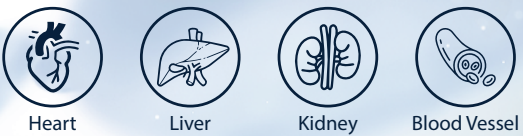
With unique formulation derived from natural, non-GMO soy, is an evolution in modern medicine.





## NEW IMPROVED FORMULA PlaqX Extra

With 100% vegetal based formulation



### NOW WITH 3 ACTIVE INGREDIENTS FOR OUTSTANDING LONGEVITY & BEAUTY

The newly improved MF3 PlaqX Extra is a phyto therapeutic supplement that offers even better efficacy and bioavailability to support cellular membrane health, maintain healthy cholesterol levels as well as liver health.

Its upgraded formulation now contains Polyenyl PC Complex, which is a proprietary blend of Polyenylphosphatidylcholine (PPC), and two additional ingredients, Phosphatidylserine (PS) and Alpha Tocopherol.

Besides having a powerful line-up of phyto ingredients, the softgel shell is also made with 100% plant-based gelatin, making the newly upgraded PlaqX Extra a suitable supplement for all to consume, including vegetarians and vegans alike.

The synergy effects of this improved formulation offer better efficacy and bioavailability that takes the support and maintenance of cell membrane health, cholesterol levels and also liver functions to the next level.

## FORTIFICATIONS in this formulation

### POLYENYLPHOSPHATIDYLCHOLINE (PPC)

- ✓ Reduce visceral fat, which also known as a stubborn belly fat
- ✓ Provides integrity and structure to the cell membranes
- ✓ Regulates fluidity for nutrients and oxygen transport
- ✓ Long term supplementation of PPC reduces the absorption of cholesterol and circulating cholesterol in the system
- ✓ A major constituent of bile, which is necessary to the lipid metabolism

### PHOSPHATIDYLSERINE (PS)

- ✓ Increase the bioavailability of PPC to organs demanding this nutrient
- ✓ Added in a sufficient quantity to improve and support the role of PPC

### ALPHA TOCOPHEROL

- ✓ Protect PPC from degradation and improve formulation stability
- ✓ Protects cell membranes and other fat-soluble parts of the body from oxidative damage

### WHAT IS FATTY LIVER DISEASE?

When the human liver is confronted by various exogenous substances, it can result in the liver producing reaction metabolites that is harmful to the liver tissue that in turn can contribute to fatty liver disease.

### COMMON EXOGENOUS FACTOR THAT CAN STRESS THE LIVER:

- ⚠ Excessive alcohol consumption
- ⚠ Over consumption of sugar and saturated fat
- ⚠ Medications
- ⚠ Exposure to high amounts of pollution

### THERAPEUTIC EFFECT OF PPC ON FATTY LIVER DISEASE

- ✓ Reduced serum activities of liver enzyme markers released by liver tissue
- ✓ Reduce risk of NAFLD by lessening the lipid peroxidation triggered by free radical and oxidative insult
- ✓ Membrane damage was slowed, membrane integrity was protected
- ✓ Cell death, fibrosis, and fatty infiltration of the liver tissue were diminished
- ✓ Cell synthesis of RNA and protein increased, suggesting liver tissue regeneration
- ✓ Liver metabolism improved



## MF3 PlaqX and PlaqX Extra

Revealing PlaqX's potential for beauty and longevity.



\*Please consult your doctor/ pharmacist before taking this product

### WHAT IS PLAQX?

A revolutionary Swiss-based treatment, MF3 PlaqX has been used for 55 years in about one-fourth of the world's countries. It was originally developed to treat liver disease and dissolve fatty embolus during and after trauma surgery. In the 1990s, it evolved into a potent solution for plaque deposits.

When doctors observed their patients administered with this treatment, they also discovered that over time, those under their charge looked younger and healthier – revealing PlaqX's potential for beauty and longevity.

### PLAQX'S BENEFITS:

- Clears out plaque
- Normalizes total cholesterol
- Increases HDL (High Density Lipoprotein)
- Improves liver function
- Rejuvenates all cell membranes
- Natural, derived from non-GMO soy
- Lowers LDL (Low Density Lipoprotein) and VLDL (Very Low Density Lipoprotein)
- Lower triglycerides
- Maintain healthy kidney function
- Easy to consume

### WHY YOU NEED PLAQX

Our blood vessels transport oxygen and vital nutrients to various parts of the body. Hindering this basic, life-supporting functionality are deposits we call plaque, which accumulates over time from substances such as fat and cholesterol. Plaque causes the blood vessels to get clogged up, resulting in serious and potentially fatal diseases – including strokes and heart attacks.

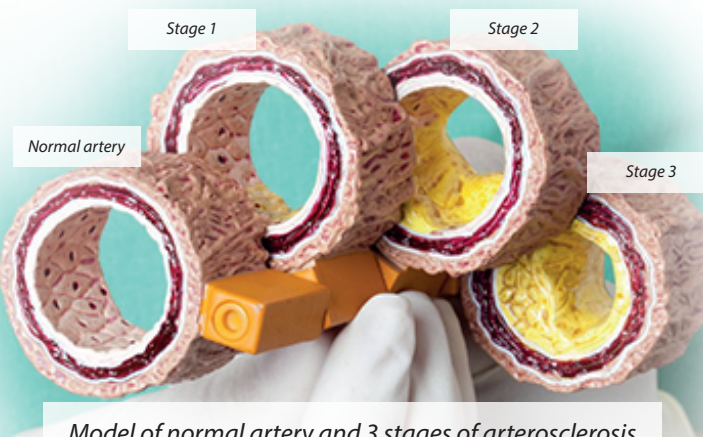
MF3's PlaqX and PlaqX Extra are specially formulated to help clear out this plaque, effectively acting as a personal clean-up crew for our blood vessels!

**Today, MF3 PlaqX's unique formulation, derived from natural, non-GMO soy, is an evolution in modern medicine.**

It is not only used to remove fatty, hardened plaque from the blood vessels, improving the overall health of the heart, liver, and kidney, but also as a supplement for general anti-aging.



MF3 PlaqX Extra is similar in efficacy to MF3 SwissPlaqX.



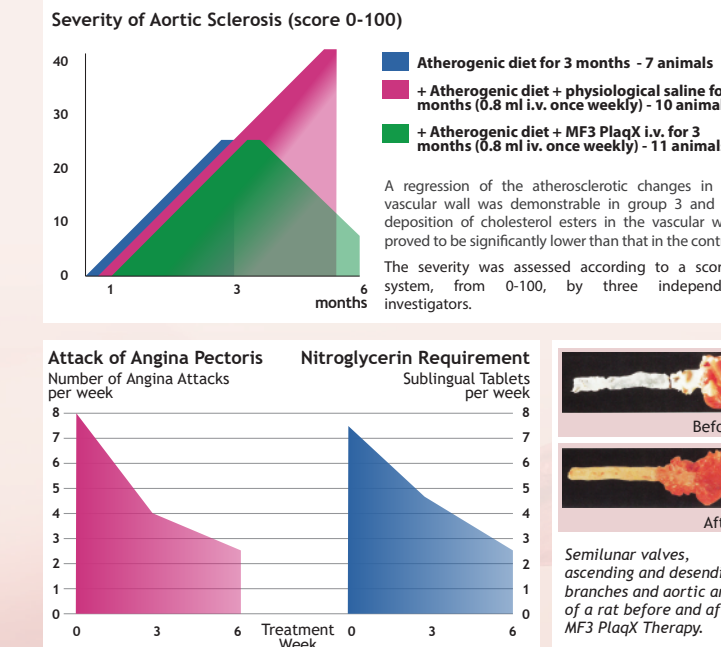
Model of normal artery and 3 stages of atherosclerosis

### PLAQX'S CLINICAL STUDIES

Before and after image of a 56-year-old male patient undergoing phosphatidylcholine therapy in Europe. The patient was insulin-dependent with diabetes mellitus, suffering from an acute bout of vasculitis affecting his toes on the right foot and two toes on the left.

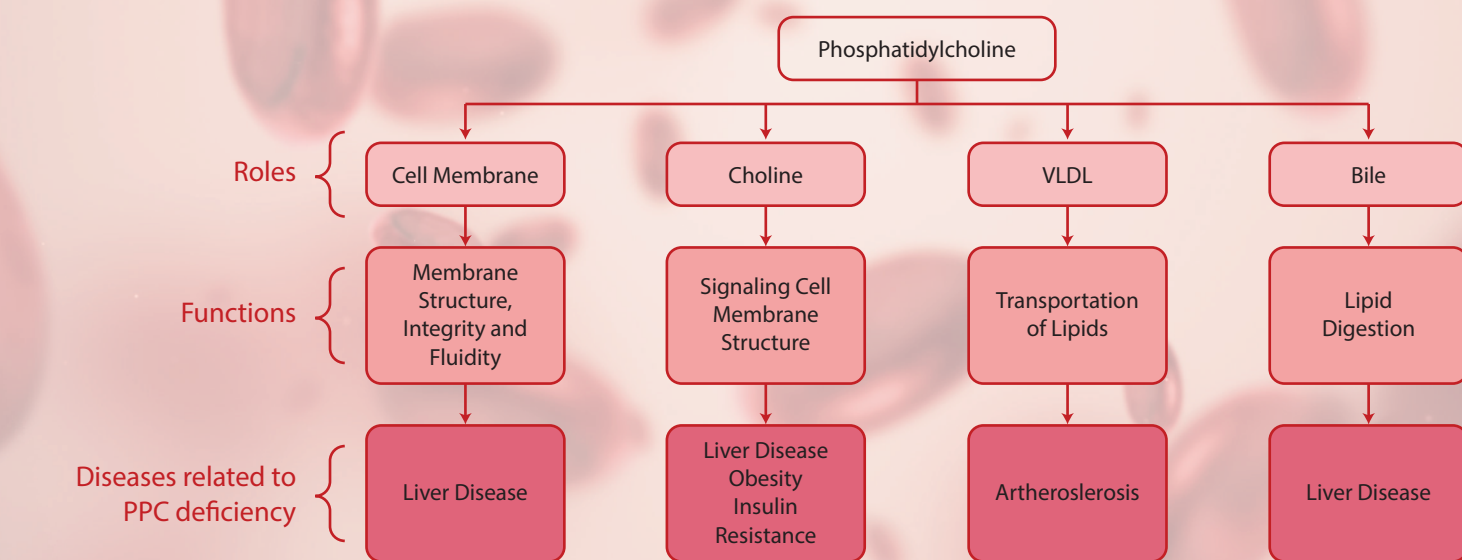


The figure below shows the results of investigations carried out with quails by W.W Stafford and Ch. H Day. After feeding an atherogenic diet to all birds for 3 months, some of the animals were operated on to study the severity of vascular wall changes.



### HOW IT WORKS: THE SECRET OF POLYENYLPHOSPHATIDYLCHOLINE

- An essential component of the cellular membrane adding fluidity and promoting overall stability, while also aiding in the function of transmembrane proteins.
- Has antioxidant, cytoprotective and fluid-regulating effects.
- Integral component of lipoproteins, especially HDL, that is involved in the transport of cholesterol from the arterial walls to the liver for processing.
- A major constituent of bile, necessary for lipid metabolism.
- Packages cholesterol and triglycerides into very-low-density lipoproteins (VLDL)
- Plays vital role cholesterol transport and degradation, helps maintain healthy blood cholesterol and triglyceride levels.
- Reduces visceral fat (also known as stubborn belly fat).



**60% of each cell membrane in the body is composed of Phosphatidylcholine (PPC)** – deficiency may cause the cell membrane to not only lose out on the benefits listed above, but also cause the cell membrane to be susceptible to oxidative stress and damage, causing dysfunction in the brain, digestive tract, and liver.

MF3's PlaqX provides an all-natural, easy-to-use solution for PPC deficiency, while also providing the body with rejuvenating anti-aging effects, making it an excellent health supplement for your everyday health, beauty, and longevity needs.



## Alfa PlaqX Series

Alfa PlaqX Pro | Alfa PlaqX

The Best Defence is a Good Offence



MF3 Alfa PlaqX Softgels Series bring essential nutrient choline to the fore. Current research continues to uncover choline's effects on health - particularly in the heart, mind and liver, which are affected by the CDP-choline pathway. The pathway is a mechanism which produces phosphatidylcholine (PC), a vital component of cell membranes and lipid-derived signalling molecules.

The body makes some choline, but most choline is generated from food and dietary supplements. MF3 Alfa PlaqX Softgels contain proprietary Choline Complex and Alpha-Tocopherol to increase the bioavailability and effectiveness of the choline squad in the body.

### Ingredients

Both MF3's Alfa PlaqX and Alfa PlaqX Pro Softgels contain a Choline complex, a unique blend of choline molecules involved in the CDP-choline pathway and offer special synergy effects.

### Cytidine diphosphate-choline

A choline source to form the pathway's end product. It is also important for synaptic strength and neural connectivity.

### Phosphatidylcholine (PC)

The end product of the pathway. The dominant choline form in the organs and brain. Involved in the hepatic transport of VLDL (very low density lipoproteins) in the liver and cell membrane maintenance.

**Effective at increasing both systemic and neural choline concentration to support cardiovascular health, brain and liver functions, and maintenance of cellular membrane structures.**

**For the Brain**  
Alfa PlaqX  
Memory and learning, cognitive health

**Alfa PlaqX Pro**  
Complementary nutritional therapy for the management of Dementia/ Alzheimer

**For the Liver**  
Alfa PlaqX  
Support liver health

**Alfa PlaqX Pro**  
Promote reduction of visceral fat and support liver health

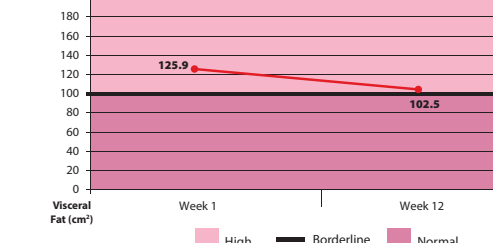
**For Cardiovascular**  
Alfa PlaqX  
Reducing homocysteine and cholesterol arterial plaque

**Alfa PlaqX Pro**  
Reducing homocysteine and cholesterol arterial plaque and also decreasing cholesterol uptake on the gastrointestinal layer

**For the Cellular Membrane**  
Alfa PlaqX & Alfa PlaqX Pro  
Support cellular membrane fluidity and stability

### ALFA PLAQX SOFTGELS CASE STUDY

Volunteer experienced a reduction of visceral fat volume, ranging from 1-24cm<sup>2</sup> in just 12 weeks



Reduction of inflammatory marker c-reactive protein (CRP) levels after 3 months of Alfa PlaqX Softgels consumption 1 softgels / day

